

Specifications

SPECIFICATIONS	5202CA	5152CA/5152MA	5102CA/5102MA	5062CA/5062MA
Bandwidth	200MHz	150MHz	100MHz	60MHz
SampleRate	1GSa/s			
Equivalent Sampling	50GSa/s			
Rise Time	1.8ns	2.3ns	3.5ns	5.8ns
Input Impedance	1MΩ 13pF,50Ω		1MΩ 13pF	
Timebase Range	1ns/div~50s/div		2ns/div~50s/div	5ns/div~50s/div
X-Y Operation	BandWidth	200MHz	150MHz	100MHz
	Phase Difference	±3 degrees		
Display	VGA Color LCD 320×240	VGA Color LCD/Mono LCD 320×240		

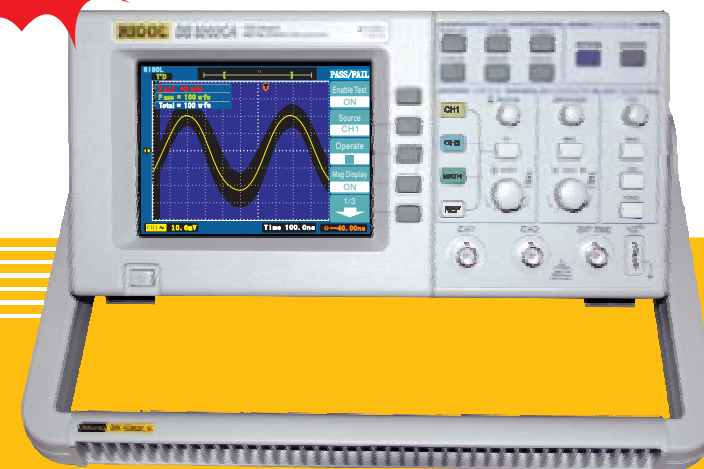
SPECIFICATIONS	5152C/5152M	5102C/5102M	5062C/5062M	5042M	5022M
Bandwidth	150MHz	100MHz	60MHz	40MHz	25MHz
SampleRate	250MSa/s				
Equivalent Sampling	50GSa/s				
Rise Time	2.3ns	3.5ns	5.8ns	8.8ns	14ns
Input Impedance	1MΩ 13pF,50Ω		1MΩ 13pF		
Timebase Range	1ns/div~50s/div	2ns/div~50s/div	5ns/div~50s/div	10ns/div~50s/div	20ns/div~50s/div
X-Y Operation	BandWidth	150MHz	100MHz	60MHz	40MHz
	Phase Difference	±3 degrees			
Display	VGA Color LCD/Mono LCD 320×240			Mono LCD,320×240	

MUTUAL PARAMETER

Number of Channels	2CH+Ext.Trig	
Memory	4K per channel	
Vertical Sensitivity	2mV/div~5V/div	
Vertical Resolution	8 bits	
Input Coupling Ch1&2	DC, AC or GND	
Trigger Sources	CH1,2,ext,ext/5,AC line	
Trigger Mode	Auto,Normal,Single	
Trigger Type	Edge,TV,Pulse,Delayed	
Trigger Coupling	DC,AC,LF Rej.,HF Rej.	
Horizontal Accuracy	±0.01%	
Maximum input Voltage	400V(DC+AC peak),5Vrms@50Ω	
Math	+, -, X, ÷, FFT	
FFT	Window	Hanning, Hamming, Blackman, Rectangular
	Sample	1024 points
Auto Measurement	Vp-p, Vrms, Vamp, Vmax, Vmin, Vtop, Vbase, Vavg, Overshoot, Preshoot, Freq, Period, +PulseWidth, -PulseWidth, Risetime, Faltime, +Duty, -Duty, Delay1-2 f, Delay1-2 t	
CursorMeasure	Manual, Trace, AutoMeasure	
Storage	10Waveforms, 10setups	
Power	Worldwide Use, 100~240V/50VA Max	
Net Weight	4.5Kg	
Size (excl. Handle)	303mmx145mmx288mm	
Accessories	Probex2(1x&10x), Power Cable, User manual	
Options	Extension Module (EM5-CM, EM5-COM, EM5-P/F) , Tools Bag, USB Cable	

DS5000 Series Digital Storage Oscilloscope

NEW!

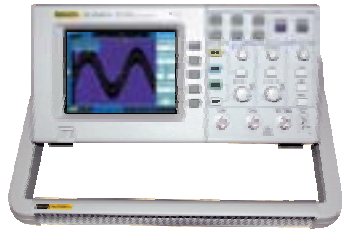


*New standard for Performance
Price*

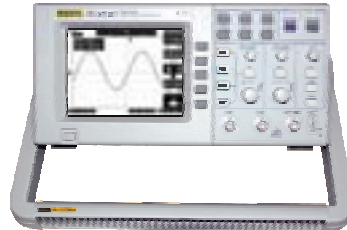
■ Ds5000 Series

200MHz 150MHz 100MHz 60MHz 150MHz 100MHz 60MHz 40MHz 25MHz

1GSa/s	DS5202CA	DS5152CA	DS5102CA	DS5062CA	DS5152MA	DS5102MA	DS5062MA	-	-
250MSa/s	-	DS5152C	DS5102C	DS5062C	DS5152M	DS5102M	DS5062M	DS5042M	DS5022M



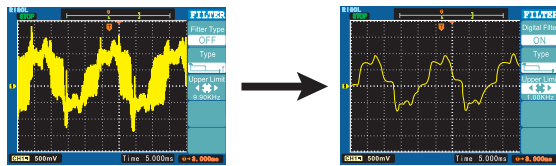
Color



Monochrom

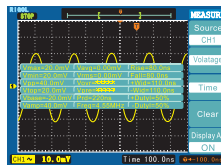
● Remarkable digital performance

BUILT-IN DIGITAL FILTER



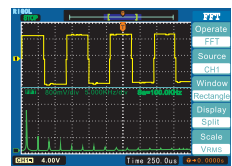
DS5000 Series have 4 kinds of special digital filter function (Low pass, High pass, Band pass, Band reject). It is very convenient for users to analyze and measure complicated signals.

20 AUTO-MEASUREMENTS



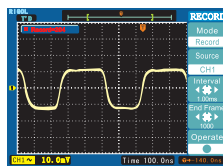
DS5000 series features 20 auto-measurement includes 10 voltage measurements: Vp-p, Vamp, Vtop, Vbase, Vmax, Vmin, Vavg, Vrms, Overshoot, and Preshoot. 10 time measurements: Freq, +PulseWidth, -PulseWidth, Period, RiseTime, FallTime, +Duty, -Duty, Delay1-2f, and Delay1-2 \bar{f} .

MULTI-MATH FUNCTION



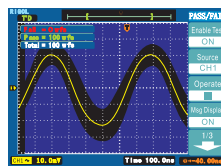
The DS5000 provides +, -, \times , \div and FFT math functions. Users can do different measurement; power measurement, ratio measurement according the math function above. And found out distortion content in the waveform.

WAVEFORM REC, REPEAT, STORAGE



The waveform recorder is one of the specially enhanced features in DS5000. The record time interval can be adjusted from 1 ms to 1000 s. Record length can vary from 1 to 1000 frames.

PASS/FAIL FUNCTION

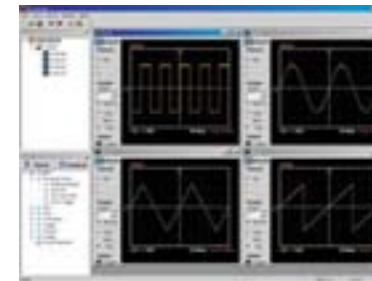
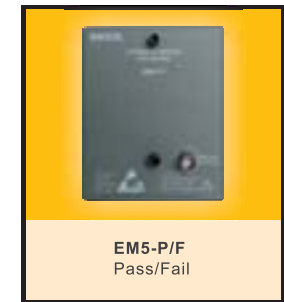


The pass/fail function operates based on a user-defined rule, to find out any abnormal signal, or to trigger the waveform recorder and capture random events.

● Features

- Easy-to-read LCD display
- Dual channel, Bandwidth: 25MHz~200MHz per channel
- Sample Rate (Real-time): up to 1GSa/s
- Equivalent Sampling: up to 50GSa/s
- Advanced Triggering on edge, video, pulse, delay
- 20 Automatic Measurements, Manual Cursor Measurement
- 10 waveforms, 10 setups storage
- +, -, \times , \div , Mathematic Functions
- Edge, video, pulsewidth, delay triggering
- Built in FFT&USB interface
- Automatic Calibration
- Exclusive Digital Filter & waveform recorder
- Hardware frequency counter
- Capture rate over 1k waveforms/s
- 10 Languages user interface
- Built in help
- Optional Extend Module: Pass/Fail output; RS-232/GPIB Interface

● Extension Module



PC control and analysis software (Ultrascope)

- The Ultrascope software provides the following control and analysis features:
- Use Data Browser to display captured waveforms, data and measurements.
 - Use DSO Controller to control the oscilloscope locally or over the network.
 - Export the waveform in "BMP" format.
 - Save the data into "TXT" or "Excel" file for analysis.
 - Print waveforms.

● Accessories

