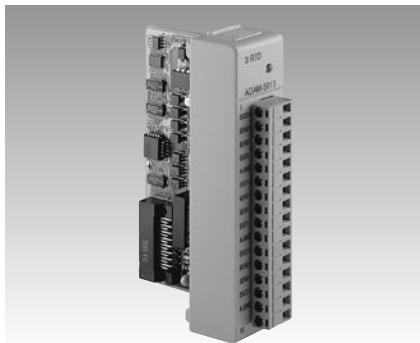


# ADAM-5013 ADAM-5017 ADAM-5017UH

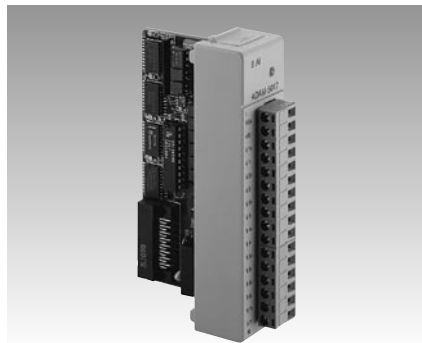
3-channel RTD Input Module

8-channel Analog Input Module

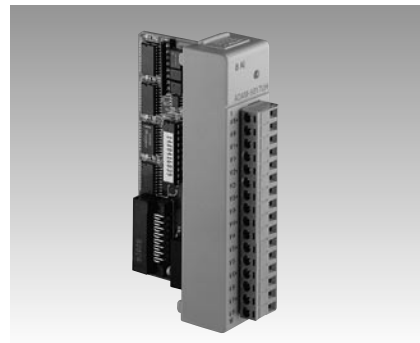
8-channel Ultra High Speed Analog Input Module



ADAM-5013



ADAM-5017



ADAM-5017UH



## Specifications

### General

- **Certifications** CE
- **Connectors** 1 x Plug-in screw terminal (# 14-22 AWG)
- **Power Consumption** 0.85 W (typical)  
1.1 W (max.)

### RTD Input

- **Accuracy**  $\pm 0.1\%$  or better
- **Bandwidth** 13.1 Hz @ 50 Hz  
15.72 Hz @ 60 Hz
- **Channels** 3
- **CMR @ 50/60 Hz** 150 dB
- **Input Connections** 2, 3 or 4 wire
- **Input Impedance** 2 M $\Omega$
- **Input Type** PT100 or Ni RTD
- **NMR @ 50/60 Hz** 100 dB
- **Resolution** 16-bit

### RTD Types and Temperature Ranges

#### IEC RTD 100 ohms

Pt	-100° C	to	+100° C	a=0.00385
Pt	0° C	to	+100° C	a=0.00385
Pt	0° C	to	+200° C	a=0.00385
Pt	0° C	to	+600° C	a=0.00385

#### JIS RTD 100 ohms

Pt	-100° C	to	+100° C	a=0.00392
Pt	0° C	to	+100° C	a=0.00392
Pt	0° C	to	+200° C	a=0.00392
Pt	0° C	to	+600° C	a=0.00392

#### Ni RTD

Ni	-80° C	to	+100° C
Ni	0° C	to	+100° C

- **Sampling Rate** 10 samples/sec. (total)
- **Span Drift**  $\pm 0.01^\circ \text{C}/^\circ \text{C}$
- **Zero Drift**  $\pm 0.015^\circ \text{C}/^\circ \text{C}$

### Protection

- **Isolation Voltage** 3000 V<sub>DC</sub>

## Ordering Information

- **ADAM-5013** 3-channel RTD input module

## Specifications

### General

- **Certifications** CE, FM
- **Connectors** 1 x Plug-in screw terminal (# 14-22 AWG)
- **Power Consumption** 1 W (typical)  
1.25 W (max.)

### Analog Input

- **Accuracy**  $\pm 0.1\%$  or better
- **Analog Signal Range**  $\pm 15 \text{ V max.}$
- **Bandwidth** 13.1 Hz @ 50 Hz  
15.72 Hz @ 60 Hz
- **Channels** 8 differential
- **CMR @ 50/60 Hz** 92 dB min.
- **Input Impedance** 2 M $\Omega$
- **Input Type** mV, V, mA
- **Input Range**  $\pm 150 \text{ mV}, \pm 500 \text{ mV}, \pm 1 \text{ V}, \pm 5 \text{ V}, \pm 10 \text{ V}; \pm 20 \text{ mA}$   
16-bit
- **Resolution** 10 samples/sec. (total)
- **Sampling Rate**  $\pm 25 \text{ PPM}/^\circ \text{C}$
- **Span Drift**  $\pm 1.5 \mu\text{V}/^\circ \text{C}$
- **Zero Drift**  $\pm 1.5 \mu\text{V}/^\circ \text{C}$

### Protection

- **Isolation Voltage** 3000 V<sub>DC</sub>
- **Fault and Overvoltage Protection** Withstands overvoltage up to  $\pm 35 \text{ V}$

**Note:** The voltage difference between any two pins must not exceed  $\pm 15 \text{ V}$

## Ordering Information

- **ADAM-5017** 8-channel analog input module

## Specifications

### General

- **Certifications** CE
- **Connectors** 1 x Plug-in screw terminal (# 14-22 AWG)
- **Power Consumption** 1.75 W (typical)  
2.2 W (max.)

### Analog Input

- **Accuracy**  $\pm 0.1\%$  or better
- **Bandwidth** 200 kHz
- **Channels** 8 differential
- **CMR @ 50/60 Hz** 92 dB min
- **Differential Non-linear**  $\pm 1 \text{ LSB}$
- **Input Impedance** 20 M $\Omega$  (voltage inputs)  
120  $\Omega$  (current inputs)
- **Integral Non-linear**  $\pm 1 \text{ LSB}$
- **Input Type** mV, V, mA
- **Input Range**  $\pm 10 \text{ V}, +0-10 \text{ V}, 0-20 \text{ mV}, +4-20 \text{ mA}$
- **Low or high pass filter** Configured by User
- **Resolution** 12-bit
- **Sampling Rate** 200 K (single channel)  
50 K (8 channels)
- **Signal Input Bandwidth** 200 kHz for both voltage and current inputs

### Protection

- **Isolation Voltage** 3000 V<sub>DC</sub>

### Note:

1) The voltage difference between any two pins must not exceed 15 V

2) Distinct range settings allowed on each channel

## Ordering Information

- **ADAM-5017UH** 8-channel Ultra High Speed Analog Input Module